

## GWST-CHF Large Flange Hexagonal Closed End Threaded Insert

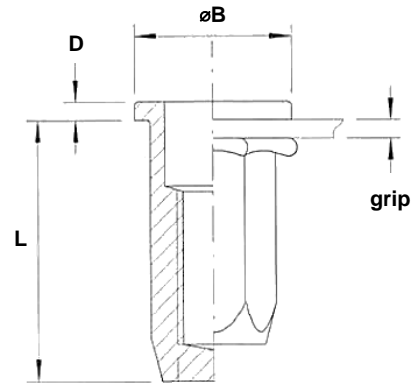
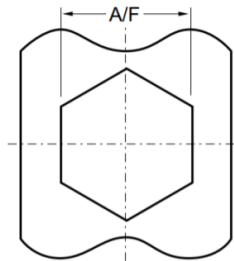
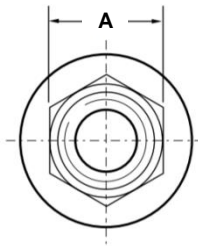
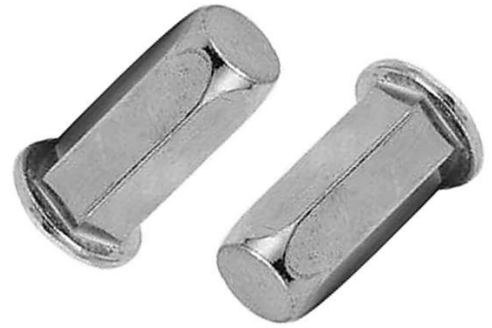
Steel · Large flange · Full hexagonal · Closed end  
M4 - M10

### Features

- Designed to provide load bearing threads in thin sheet materials
- Large flange head provides a load bearing surface and reinforces the hole to prevent push-out
- Hexagonal section and bore improves torque-to-turn in components via form lock when compared to round and splined inserts
- Closed end prevents the ingress of dirt and fluids into thread and electrical circuits

### Material

- Steel, zinc plated



Part No.	Thread Size	Grip Range		Hole Size A/F	A	øB	D	L
		min.	max.					
GWST-CHFM4-0520	M4	0.5	2.0	+0.1	-0.02/-0.15	±0.35	±0.15	±0.35
GWST-CHFM5-0530	M5	0.5	3.0	7.0	7.0	10.0	1.0	19.0
GWST-CHFM5-3055		3.0	5.5					21.5
GWST-CHFM6-0530	M6	0.5	3.0	9.0	9.0	13.0	1.5	21.5
GWST-CHFM6-3055		3.0	5.5					23.5
GWST-CHFM8-0530	M8	0.5	3.0	11.0	11.0	16.0	1.5	24.5
GWST-CHFM8-3055		3.0	5.5					27.0
GWST-CHFM10-0835	M10	0.8	3.5	13.0	13.0	19.0	2.0	31.0
GWST-CHFM10-3560		3.5	6.0					33.5

Thread Size	Max. torque	Pull-out	Torque-to-turn	Shear strength
	Nm max.	Kn	Nm	kN
M4	> ~7.5	~8.8	> ~5.5	~2.6
M5	~12.0	> ~12.0	> ~6.5	~3.6
M6	> ~24.5	~23.0	> ~21.0	~5.1
M8	> ~50.0	~32.8	> ~30.0	~6.6
M10	> ~70.0	> ~40.0	~50.0	~7.9